



**BRAC** SCHOOL OF  
PUBLIC HEALTH  
JAMES P. GRANT



[www.bracjpgsph.org](http://www.bracjpgsph.org)



# MASTER OF PUBLIC HEALTH PROGRAMME

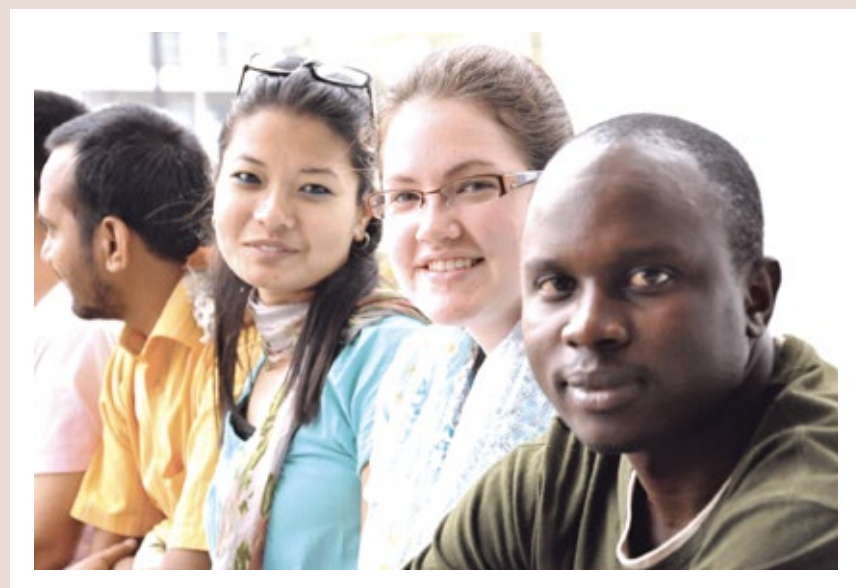
TRANSFORMATIVE PUBLIC HEALTH LEARNING FOR THE 21<sup>ST</sup> CENTURY

24<sup>th</sup> January 2021 - 26<sup>th</sup> January 2022

# PROGRAMME OVERVIEW

The Master of Public Health (MPH) Programme at BRAC James P Grant School of Public Health (JPGSPH), BRAC University is a one-year full-time programme that offers transformative public health learning to develop next-generation public health leaders for 21<sup>st</sup> century public health challenges.

To effectively address diverse health realities affecting disadvantaged communities in the developing world, BRAC James P Grant School of Public Health (JPGSPH), BRAC University employs an interdisciplinary integration of **Education, Training, Research and Advocacy**.



## A UNIQUE MPH PROGRAMME

### EXPERIENTIAL COMMUNITY-IMMERSIVE LEARNING

Public health competency-based curriculum for developing world health challenges & solutions

### GLOBAL PUBLIC HEALTH FACULTY AND PRACTITIONERS

from International Institutions including Harvard University, USA; Stanford University, USA; McGill University, Canada; Liverpool School of Tropical Medicine, UK; UNSW, Australia, Makerere University, Uganda; Griffith University, Australia; American University of Paris, Paris and others; and nationally reputed institutions: BRAC, icddr'b and others

## A GLOBAL CLASSROOM OF PUBLIC HEALTH LEARNERS

524 graduates from 34 countries since inception in 2005

### INNOVATIVE PUBLIC HEALTH LEARNING

#### METHODOLOGIES

Cutting-edge, real-world applied learning through rigorous urban and rural fieldwork

### PUBLIC HEALTH COMPETENCY-BASED LEARNING

Simulating, practising and using real-world public health skills within diverse public health contexts

### EMPLOYABLE PROFESSIONAL SKILLS DEVELOPMENT

Developing public health Technical, Management and Soft skills for real-world public health

## POST-MPH EMPLOYMENT AND HIGHER STUDIES

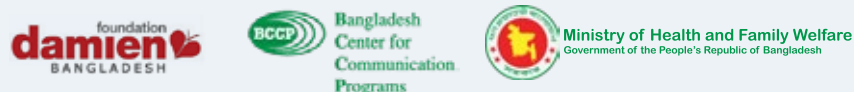
Graduates from BRAC James P Grant School of Public Health (JPGSPH), BRAC University have been recruited by national and international, UN organisations and academic institutions across the globe. 60 graduates have enrolled in or completed doctoral and post-doctoral studies at leading universities.



*\*See more in MPH Prospectus*



# HEALTH SERVICE DELIVERY AND LEARNING LABS:



The School relies on 36 partners and innovative health programmes, including: Health, Nutrition & Population, Maternal, Neonatal & Child Health, Tuberculosis; Malaria, Water, Sanitation and Hygiene, Climate Change, Elderly care, and Refugee programs, etc. The School has partnerships with Government, private sector and NGOs which allows for fieldwork learning at clinics/facilities, district hospitals and communities in urban and rural areas.

## ADMISSION REQUIREMENTS

- 4 Years Bachelor's Degree or 3 Years Bachelor's plus 1-Year Master's/Postgraduate Diploma Degree in Health Sciences (Medicine, Nursing, Midwifery, including Allied Health Sciences)/Life Sciences/ Social Sciences (Anthropology, Public Health, Food and Nutrition, Sociology, Psychology or any other relevant Social Science Discipline)
- Minimum CGPA 3 out of 4 for Bachelor's Degree
- Minimum GPA of 3 in SSC/Equivalent and HSC/Equivalent separately (including additional subject)
- Minimum GPA of 3 in O-Levels in five subjects and A-Levels in two subjects or equivalent as per BRAC University scale
- 2 - 3 years of professional public health experience preferred
- Proficiency in oral and written English and basic Mathematics
- Basic Computer skills including Microsoft Office and Data Analysis Software

***\*Anyone irrespective of ethnicity, religion, disability, gender or sexual orientation may apply.***

## TUITION

Tuition for 1-year International MPH Programme: US\$ 20,000

## WHAT WE COVER AS PART OF TUITION

- All course fees and course related materials (Books, Articles, Lecture Notes) for 18 Courses
- Experiential community-immersive fieldwork in 14 courses in different rural and urban settings
- Access to online resource materials: journals, reports, PubMed, HINARI, MyAthens, EBSCO, Cochrane etc.
- Access to State-of-the-Art Facilities: Tele-Video Conference room, Virtual Learning Management System, Computer lab, Library, Classrooms, 26 BRAC Learning Residential Centers
- MPH Dissertation/ Summative Learning Project (SLP) – all costs covered including mentoring & supervision.

## ACCOMMODATION

BRAC James P Grant School of Public Health (JPGSPH), BRAC University offers accommodation for international students at BRAC Dormitories and ensures housing facilities, meals, transportation & internet services in the residential space.

***\*The total cost of accommodation for one year per student: USD 9,000***

## SCHOLARSHIPS

- Limited WHO Special Programme for Research and Training in Tropical Diseases (TDR) scholarships for applicants based on academic merit and public health experience in neglected tropical disease from low- and- middle income countries in WHO Southeast Asia and Western Pacific regions <https://bit.ly/2AJZwdj>
- BRAC University scholarships for national and international applicants
- Sir Fazle Hasan Abed scholarship for Bangladeshi national
- Amena Azfar & Hurmatunnessa Rob scholarships for meritorious and socio-economically disadvantaged Bangladeshi female applicants

***\*Applicants sponsored by UN organisations, bilateral/multilateral organisations are required to pay full tuition & accommodation fees***

***\*MPH programme will be offered Online if the pandemic continues and there will be a reduction in tuition costs.***

*(See below for MPH online learning 2020) Scholarships will be available as outlined above.*

# MPH ONLINE LEARNING 2020

BRAC JPG School of Public Health has been offering MPH real time online learning from March 22, 2020. Currently we have 38 students from the UK, India, Philippines, Myanmar, Nigeria, Nepal, Fiji, Indonesia, Sierra Leon, Afghanistan, Ethiopia, Maldives, and Bangladesh. We also have global faculty members from the USA, UK, South Africa, Canada, Australia, who have been teaching through this online platform and interacting with students and other faculty.

Some features include:

- Interactive online group-work to find solutions for practical public health problems in developing world contexts
- Students are practicing cutting-edge, real world technical and soft skills learning through our Online platform
- Participating in online debates, and presenting their creative ideas and demonstrating critical thinking skills

## DISTINCTIVE FEATURES OF OUR ONLINE PLATFORM

- Global faculty and public health practitioners around the world
  - Real-time online interactive lectures followed by Open discussions and Q/A sessions
  - Refresher sessions are offered in specific intervals to review discussions, address any queries and this allows for focused online tutorials
  - Developing qualitative and quantitative research skills during pandemic via online interviews and surveys with community based respondents (i.e garment workers, care givers, health providers) from different geographical regions and within Bangladesh
  - Real time structured and need based support/coaching and supervision by faculty members and Teaching Fellows
  - Breakout sessions for intensive group work and country-based case studies, preparing for debates, online role simulations, etc.
  - Live Dialogues with different stakeholders, who attend via panel sessions and webinars
  - Virtual Learning Management System allows for flexible learning by recording all interactive lectures
- 
- State of the art online learning platforms are being used
  - Readily available IT and MPH management team for continual support
  - Remote troubleshooting of academic and technical issues
  - Internet Coverage by the School to ensure uninterrupted live sessions for the students



## GLOBAL FACULTY



**RICHARD CASH**, teaching since 2005  
Harvard University, USA  
Infectious Diseases module

*Teaching in the online MPH programme at BRAC JPGSPH has been an excellent experience. The support staff has been very creative and innovative in adapting to this new approach to learning.*



**ERMIN ERASMUS**, teaching since 2017  
University of Waterstand, South Africa  
Health Policy sessions

*I expected it to be boring and passive, but by combining video, chat and collaboration tools - and the strong in-session support of the BRAC JPGSPH team - we were able to create a very participative and engaging teaching experience.*



**MIATTA GBANYA**, teaching since 2016  
UNICEF, Afghanistan  
Health System Management sessions

*This year it has not been easy for all of us, but I must say that I am very proud of BRAC JPGSPH for living up to the 'New Normal' amidst the ongoing COVID-19 Pandemic. I am equally pleased to have had this 1<sup>st</sup> teaching experience via Zoom and the MPH students were fully engaged and teaching fellows very supportive.*



**DR. SHAMS EL ARIFEEN**, teaching since 2005  
ICDDR, Bangladesh  
Epidemiology (Research Methodology)

*Nothing beats physical classroom teaching and interaction, but this was an excellent experience as the first ever Online Course at BRAC JPGSPH. This wouldn't have been possible without the support from school management.*

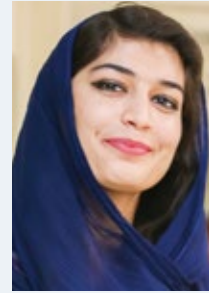
# GLOBALY ONLINE: STUDENTS FROM AROUND THE GLOBE



**RAFAEL MATOY**

16<sup>th</sup> Batch, Philippines

*The flexibility of the teachers, relevant contents and creative design for MPH Online Courses are essentials for an interactive online class to produce public health experts in the digital age.*



**SHAFIQA GHAURI**

16<sup>th</sup> Batch, Afghanistan

*BRAC JPGSPH showed me the path to reach my big dreams by embracing the new normal during this challenging situation and taught how to achieve goals through great effort and commitment.*



**VICKI ANITA IBBETT**

16<sup>th</sup> Batch, United Kingdom

*Active engagement in Zoom has led to many invaluable peer learning opportunities during online MPH sessions, through the abundance of thought-provoking questions and sharing of insightful experiences and opinions.*



**EMEGHARA OKECHUKWU**

16<sup>th</sup> Batch, Nigeria

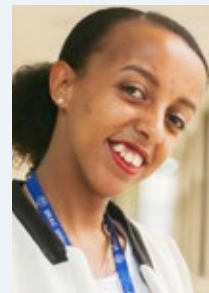
*BRAC JPGSPH's online learning was my first online learning experience. And it was interactive, content rich and beyond my expectations.*



**YOGESH SHARMA**

16<sup>th</sup> Batch, India

*Online Learning during these unprecedented times became an enjoyable experience when your batch-mates and MPH team supports you as a family.*



**WENGELAWIT YARED YEGELETU**

16<sup>th</sup> Batch, Ethiopia

*Virtual learning is the new normal in the current pandemic and the best place with extraordinary learning innovation and high-quality online class at BRAC JPGSPH as a student of 16<sup>th</sup> MPH cohort.*





## EDUCATION

524+

Graduates from  
34 countries

## TRAINING

6200+

Health and  
Development  
Professionals  
trained

## RESEARCH

612+

Articles  
Published

127+

Research Projects  
Since Inception

## ADVOCACY

214+

Advocacy Based  
Events Through  
Multi-Stakeholder  
Engagements to Date

123+

Local and  
Global Partners

## APPLY NOW

*Application Deadline:* 31<sup>st</sup> October 2020\*

*Online Application:* <https://bit.ly/35Kemfu>

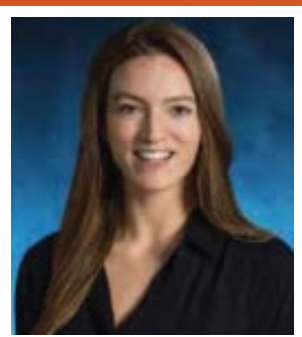


For further details  
please see our  
MPH Prospectus at  
<https://bit.ly/37cacxA>

## FOR ADMISSION INQUIRIES CONTACT

Tahsin Madani Hossain  
Md. Munirul Islam

[tahsin.hossain@bracu.ac.bd](mailto:tahsin.hossain@bracu.ac.bd)  
[munirul.islam@bracu.ac.bd](mailto:munirul.islam@bracu.ac.bd)



*"I thought choosing to go to JPGSPH was the best decision I could have made in becoming a well rounded public health professional. If you want a real, hands-on, experience-based programme - that will both challenge, inspire and develop you - this is the place for you."*

*Carly Annabelle Comins (USA), MPH 11<sup>TH</sup> Batch Graduate*



**BRAC James P Grant School of Public Health, BRAC University**  
5<sup>th</sup> Floor, icddr,b Building, 68 Shahid Tajuddin Ahmed Sharani  
Mohakhali, Dhaka 1212, Bangladesh

Telephone: +880-2-9827501-4  
[www.bracjpgsph.org](http://www.bracjpgsph.org)